

# **PO THE BEAUTY OF IMPERFECTION**













01

# ABOUT US

Pg.

10

02

# QUILT

Pg.

12

03

# TECHNICAL INFO

Pg.

20



# RO ABOUT US

10

The Beauty of Imperfection

11



Imperfection is at the heart of RO; each tile tells an individual story through the lumps, bumps and scars that run through the structure.

RO has been experimenting with surface texture for many years, exploring shapes, direction, texture, layering, and pattern to challenge concrete's abilities.

RO gives concrete a fresh reputation full of energy, warmth and beauty. By working alongside the unpredictability of concrete rather than against it, they create timeless yet unique tiles that blanket walls and floors worldwide.

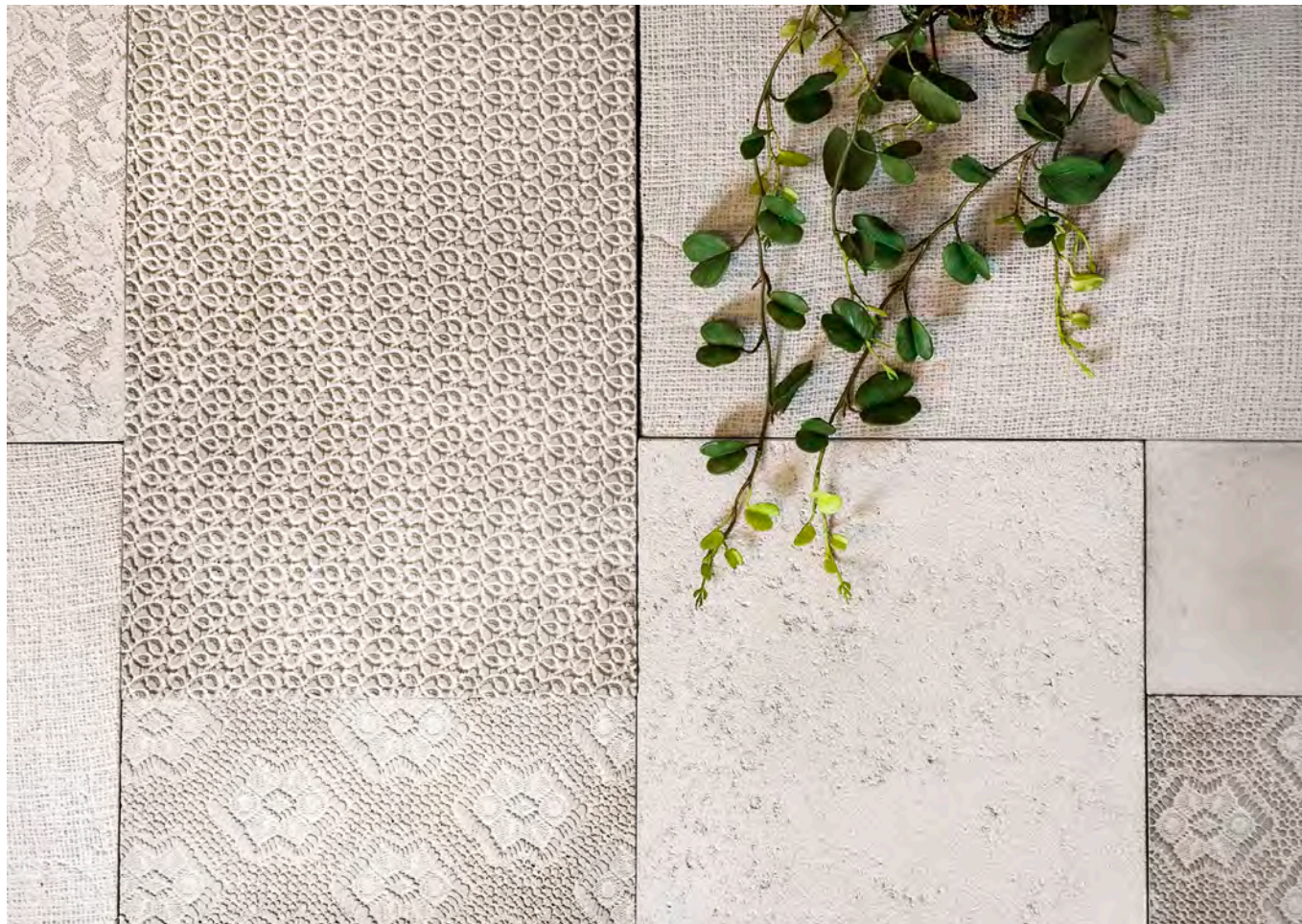
RO takes inspiration from the traditional Japanese aesthetic, Wabi-sabi. Wabi-sabi is the acceptance of imperfection within nature which is integrated into the interior design scene. 'RO' translates to morning 'dew' in English, one of nature's imperfections that, from the proper perspective, is beautiful in its simplest form.

Tali worked within the international design scene for over 20 years, learning the ins and outs of interior design. Tali and the team at RO recognised that the unpredictability of concrete enabled unique patterns and textures throughout their work. After adding some of Tali's feminine touch, they were able to form unique creations that would soon build up to become the RO they are today.

Tali and her close-knit team still stick by the original philosophy of RO: to embrace imperfection through modern concrete tiling. By embracing the imperfection of concrete's natural form, RO experiments with surface texture to create unique tiles that tell a story. Recognising the endless possibilities of concrete tiling, RO works with modern manufacturing techniques to ensure that the whole process is personal, bold and handmade. Before the tiles leave the factory, the team confirm that the tiles meet their impeccable standards. To do so, they must pass all the compulsory checks to make sure that the concrete tiles will stand the test of time. Doing so guarantees that every customer receives a breathtaking product that will exceed their expectations and excite their surface.

Conceptual material design development team: Tali Edri, Yoav Anderman, Meytal Levi, Lilach Lev, Maor Aharon, Betonada.





▲ Quilt Color 010

Quilt Color 010 ►

# RO QUILT

The possibility of infinite possibilities. The Quilt series is a range that is close to RO's heart. By incorporating lace, delicate engravings and textiles, the team at RO created an assortment of stunning textures. Random yet structured, the design is constructed by eight different surface textures, making this a must-have statement in any location.

Ro can arrange the quilt series as a standard order, or the tiles can be mixed and matched to meet the vision of each customer. With a combination of the new and old textures, each Quilt tile is handcrafted to perfection and can be applied both in and outdoors. These tiles can transform both walls and floors and come in a choice of ten colours.

Designed by Tali Edry





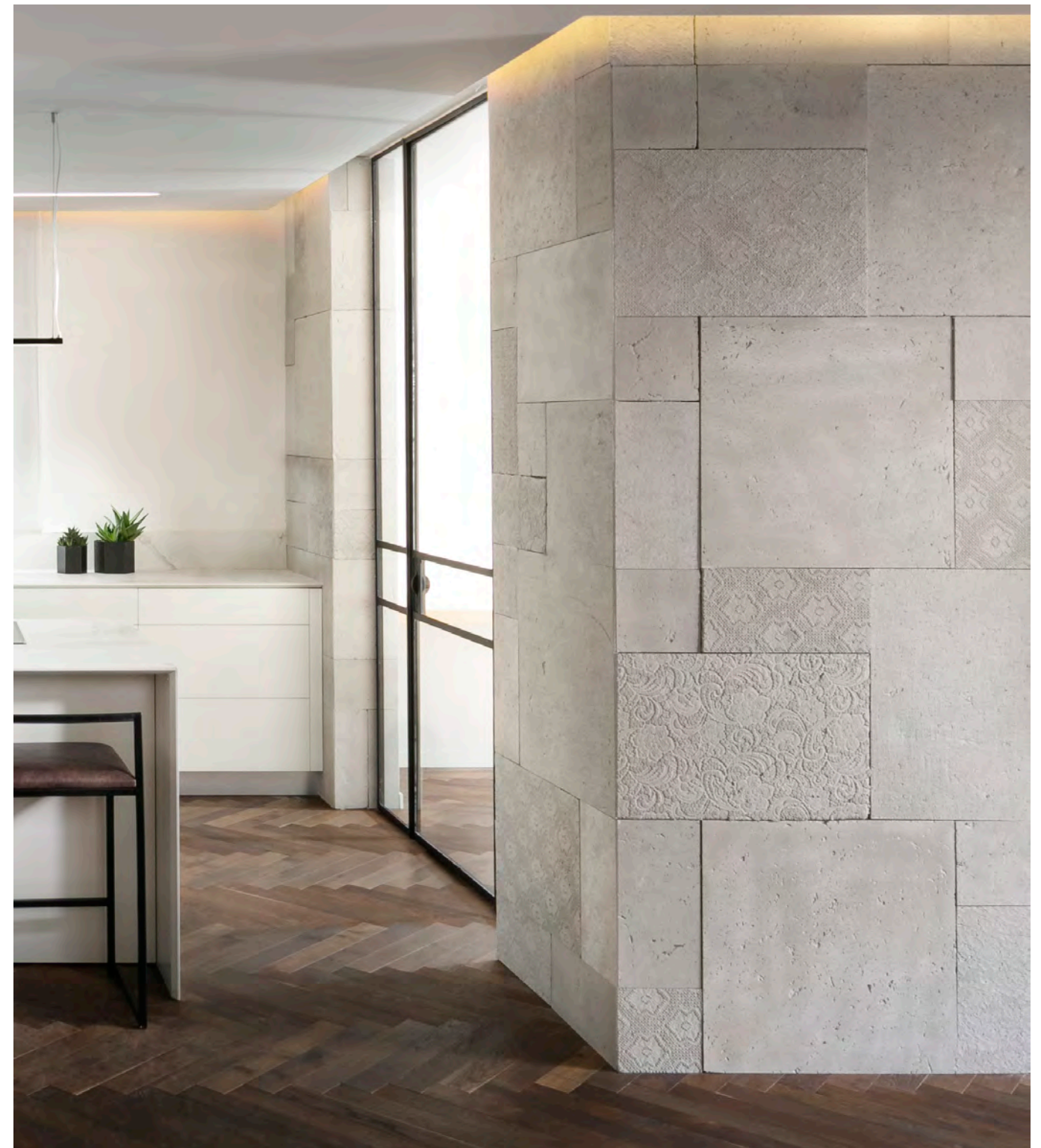
Quilt Color 030 ▼  
Photography: Itay Benit



Quilt Color 010 ►



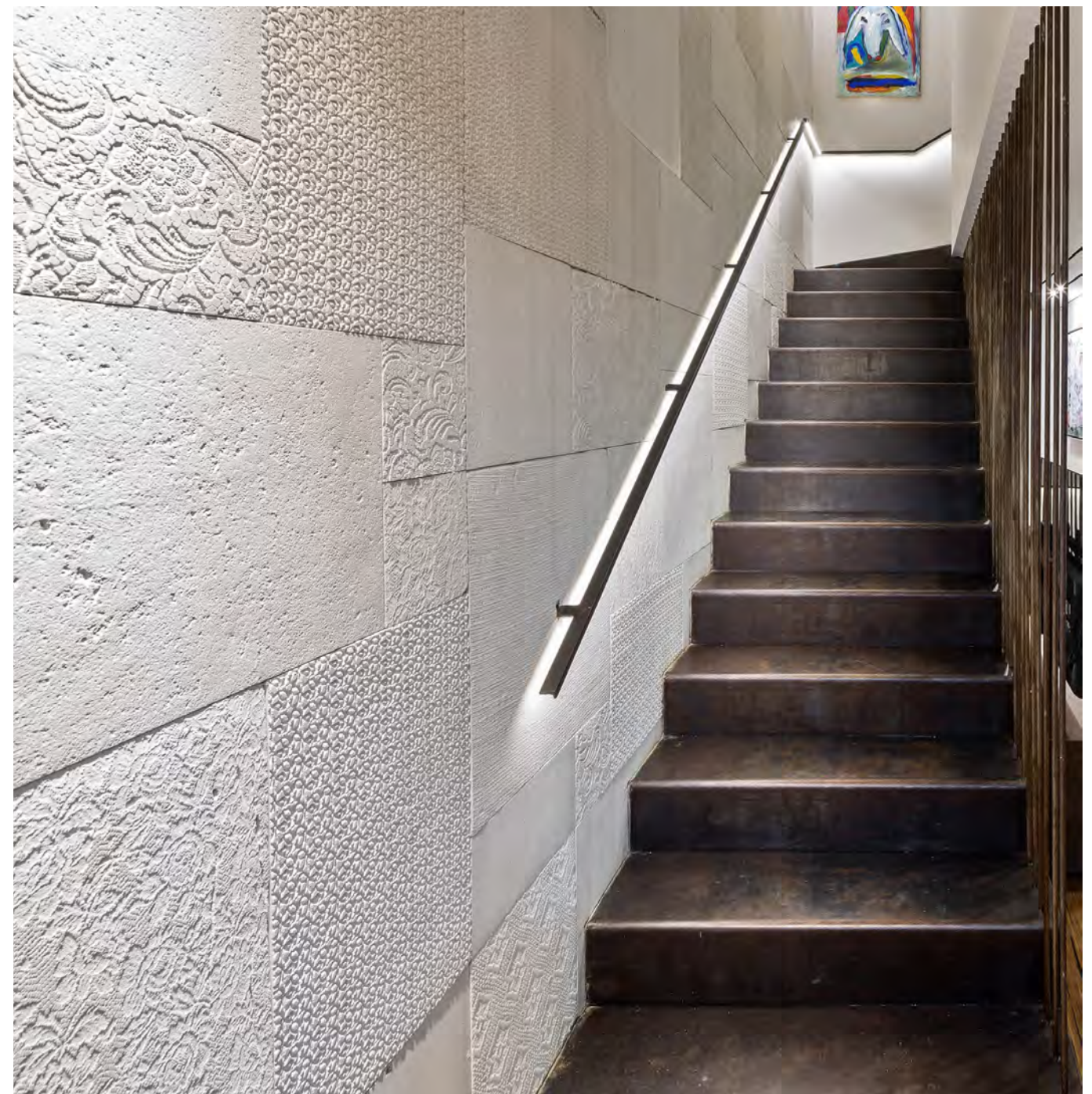




◀ Quilt Color 010

▲ Quilt Color 010  
Photography: Elad gonon, Architecture: Tzvia Kazayoff





◀ Quilt Color 030  
Photography: Itay Benit

▲ Quilt Color 001  
Photography: Shai Epstein



RO TECHNICAL  
INFO

20CM / 7 7/8"



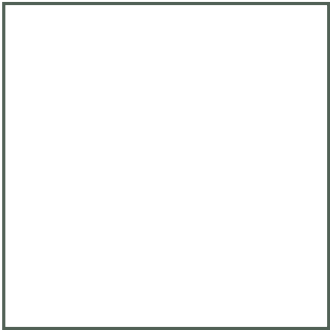
20CM / 7 7/8"

20CM / 7 7/8"



40CM / 15 3/4"

40CM / 15 3/4"



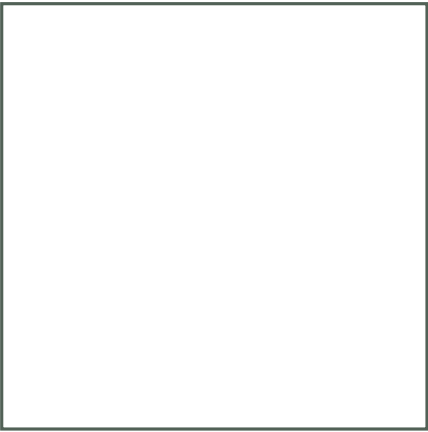
40CM / 15 3/4"

40CM / 15 3/4"



60CM / 23 5/8"

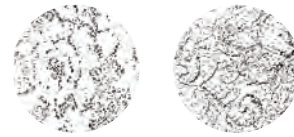
60CM / 23 5/8"



60CM / 23 5/8"

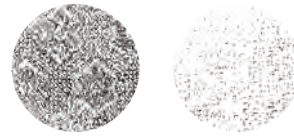


70% (area) of each order will contain an equal mix of the following six textures:



Blossom

Paisley



Liberty

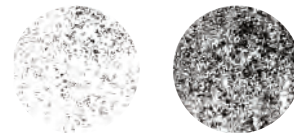
Jute



Small Paisley

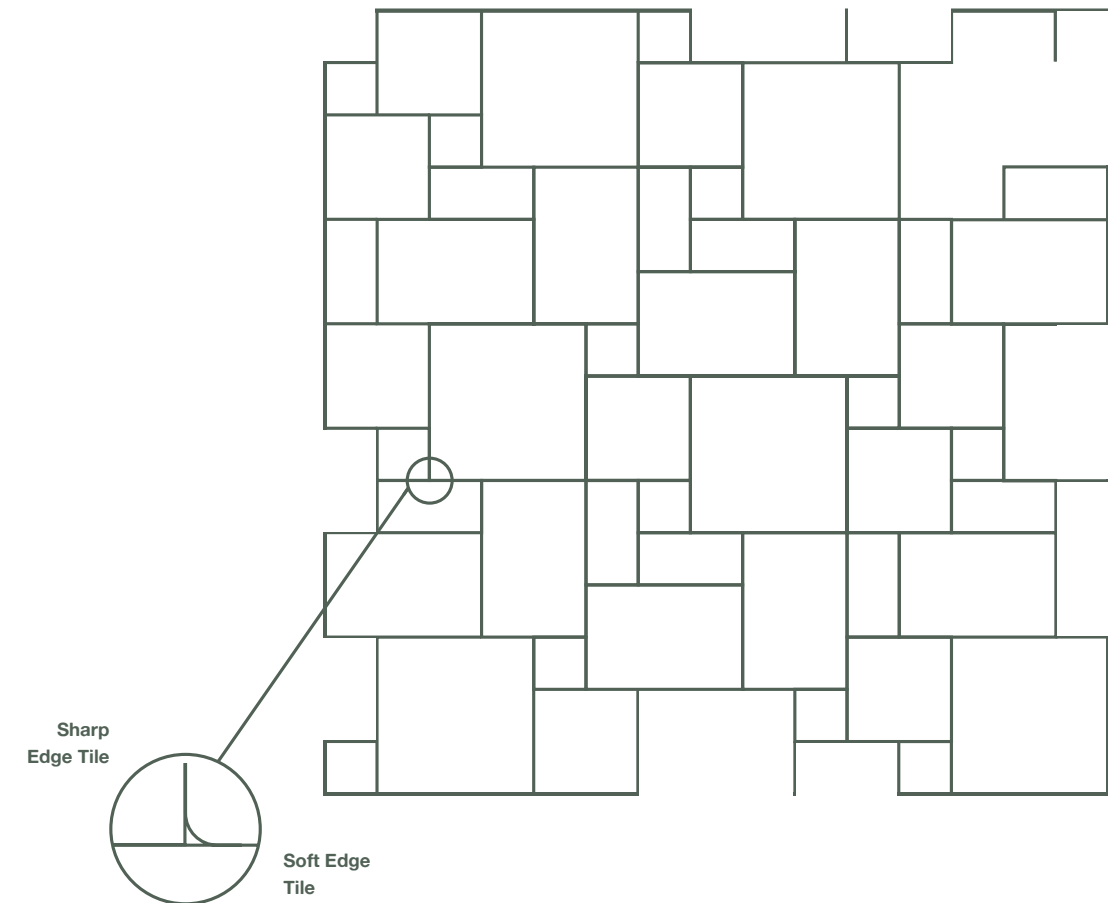
Phillis

The additional 30% in following two textures:



Natural

Travertin



“Quilt” combination contains a mix of soft-edged and sharp-edged tiles.





|       | PCS-SQM       | PCS-CRATE |
|-------|---------------|-----------|
| Quilt | Fixed Set 1.4 | 12 Sets   |

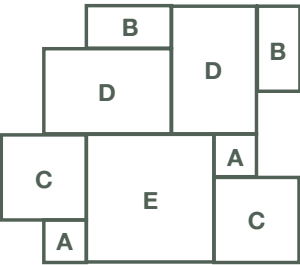
\* One fixed set covers an area of 1.4 sqm and contains:






- 2 X A Size
- 2 X B Size
- 2 X C Size
- 2 X D Size
- 1 X E Size

General Material Performance Data

|  |  Dimensions Tolerance |  Bending Strength |
|--|--|--|
| * Tested according to NP EN1339 standart | Class 3(R) ±2mm  | Class 2(T) ≥4mpa   |

| SQM-CRATE | KG-CRATE | SUITABILITY                                       | CATALOG NUM. | NOTES              |
|-----------|----------|---|--------------|--------------------|
| 16.8      | 722.4    | Interior / Exterior<br>Use For Walls /<br>Floring | MO1002       | Hand Made Concrete |



|  Abrasion Resistance |  Reaction To Fire |  Slip / Skid |  Water Absorption |  Freeze / Thaw Resistance |
|---|--|---|--|--|
| Class 4(I) ≤20mm  | A1   | Satisfactory  | Class 2(B) ≤6% as a mean   | Class 3(D)≤1.0 kg/M²   |



# COLOUR PALETTE

001

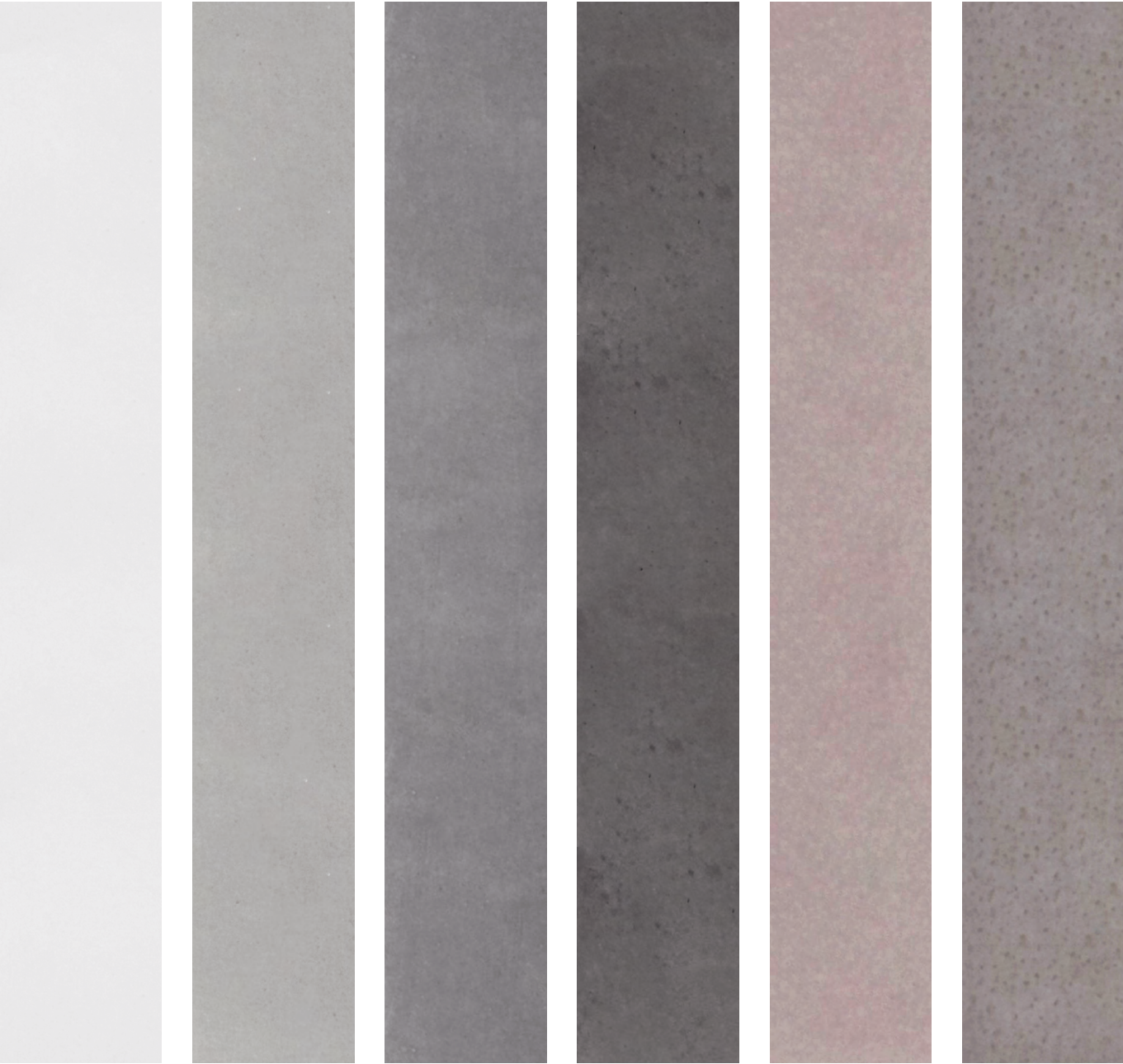
010

011

012

013

014



019

020

030

031

032





